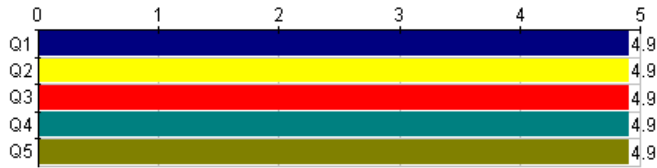


Course:	IT-604 B - Project Management	Department:	ITA
Responsible Faculty:	Sonja Streuber	Responses / Expected:	17 / 32 (53.13%)
Focus:	Overall Results		



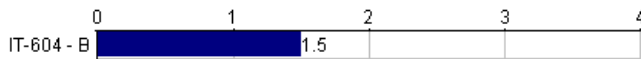
Course Course	IT-604 - B									
	Responses					Course				
	1	2	3	4	5	N	Mean	Med.	Mode	Std Dev
Q1 Workload is appropriate.	0	0	0	2	15	17	4.9	5	5	.32
Q2 Lecture and assignments are relevant/useful.	0	0	0	1	16	17	4.9	5	5	.24
Q3 Testing/evaluation procedures.	0	0	0	2	15	17	4.9	5	5	.32
Q4 Reading and class materials.	0	0	0	2	15	17	4.9	5	5	.32
Q5 Overall evaluation of this course: Now, please provide an overall evaluation of the course. This evaluation may not necessarily reflect or summarize the ratings of the four previous items.	0	0	0	2	15	17	4.9	5	5	.32

Responses: [1] 1=1 [2] 2=2 [3] 3=3 [4] 4=4 [5] 5=5

Q6 - Please make any comments or suggestions below:

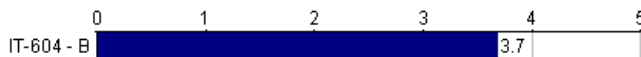
Response Rate: 41.18% (7 of 17)

- Sonja Struber is knowledgeable professor,she really trained as project management..we are very thankful to her..
- excellent i learned a lot in this course- thank-you
- Interesting course and well explain by Sonja
- Very good course.
- None
- Excellent class
- Awesome Teaching and Good interaction with students everything is excellent



University Questions University Questions	IT-604 - B									
	Responses				Course					
	RCI	OCI	FGE	O	N	Mean	Med.	Mode	Std Dev	
Q7 Why are you taking this Course?	13	1	1	2	17	1.5	1	1	1.04	

Responses: [RCI] Required Course in Major=1 [OCI] Optional Course in Major=2 [FGE] Fills General Education Requirement=3 [O] Other=4



University Questions University Questions	IT-604 - B									
	Responses					Course				
	F	S	J	S	GO	N	Mean	Med.	Mode	Std Dev
Q8 What is your Academic Standing?	5	0	0	0	10	15	3.7	5	5	1.89

Responses: [F] Freshman=1 [S] Sophomore=2 [J] Junior=3 [S] Senior=4 [GO] Graduate Other=5



University Questions University Questions	IT-604 - B										
	Responses						Course				
	A	B	C	D	F	OGO	N	Mean	Med.	Mode	Std Dev
Q9 What grade do you anticipate in this Course?	15	2	0	0	0	0	17	5.9	6	6	.32

Responses: [A] A=6 [B] B=5 [C] C=4 [D] D=3 [F] F=2 [OGO] Other (Grade of S or U, auditing a course, etc.)=1



University Questions University Questions		IT-604 - B								
		Responses				Course				
		LT3	3-6	7	MT1	N	Mean	Med.	Mode	Std Dev
Q10	How many hours per week on average did you spend on this course outside of class?	0	7	8	2	17	2.7	3	3	.67

Responses: [LT3] Less than 3=1 [3-6] 3-6=2 [7] 7-10=3 [MT1] More than 10=4



University Questions University Questions		IT-604 - B									
		Responses					Course				
		E	G	A	BA	P	N	Mean	Med.	Mode	Std Dev
Q11	Overall, I would rate this instructor	15	2	0	0	0	17	4.9	5	5	.32
Q12	Overall, I would rate this course	13	4	0	0	0	17	4.8	5	5	.42

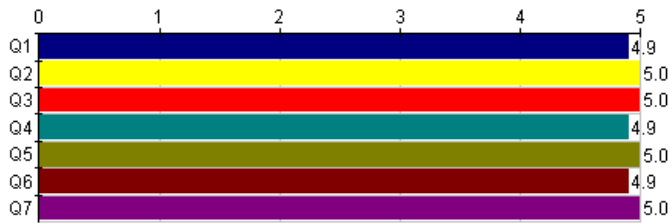
Responses: [E] Excellent=5 [G] Good=4 [A] Average=3 [BA] Below Average=2 [P] Poor=1



University Questions University Questions		IT-604 - B									
		Responses					Course				
		SA	A	N	D	SD	N	Mean	Med.	Mode	Std Dev
Q13	Learning objectives were clearly outlined in the syllabus and other course materials.	13	4	0	0	0	17	4.8	5	5	.42
Q14	Course materials and activities (assignments, exams, papers, problem sets, etc.) were related to the stated learning objectives for the course.	14	2	0	0	1	17	4.6	5	5	.97

Responses: [SA] Strongly Agree=5 [A] Agree=4 [N] Neutral=3 [D] Disagree=2 [SD] Strongly Disagree=1

Course: IT-604 B - Project Management	Department: ITA
Responsible Faculty: Sonja Streuber	Responses / Expected: 17 / 32 (53.13%)



Professor Professor		Streuber, Sonja									
		Responses					Individual				
		1	2	3	4	5	N	Mean	Med.	Mode	Std Dev
Q1	Preparation/organization/presentation.										
Q2	Interest/Enthusiasm.										
Q3	Knowledge of subject matter.										
Q4	Ability to explain material.										
Q5	Professional conduct.										
Q6	Quality of interaction with students.										
Q7	Overall appraisal of professor: Now, please provide an overall appraisal of the instructor. This appraisal may not necessarily reflect or summarize the ratings of the six previous items.										

Responses: [1] 1=1 [2] 2=2 [3] 3=3 [4] 4=4 [5] 5=5